

# CERTIFICATE OF LOCATION OF GOVERNMENT CORNER

NORTH QUARTER Corner of Section 36, Township 105 N, Range 40 W, 5 P.M.

STATE OF MINNESOTA, County of MURRAY

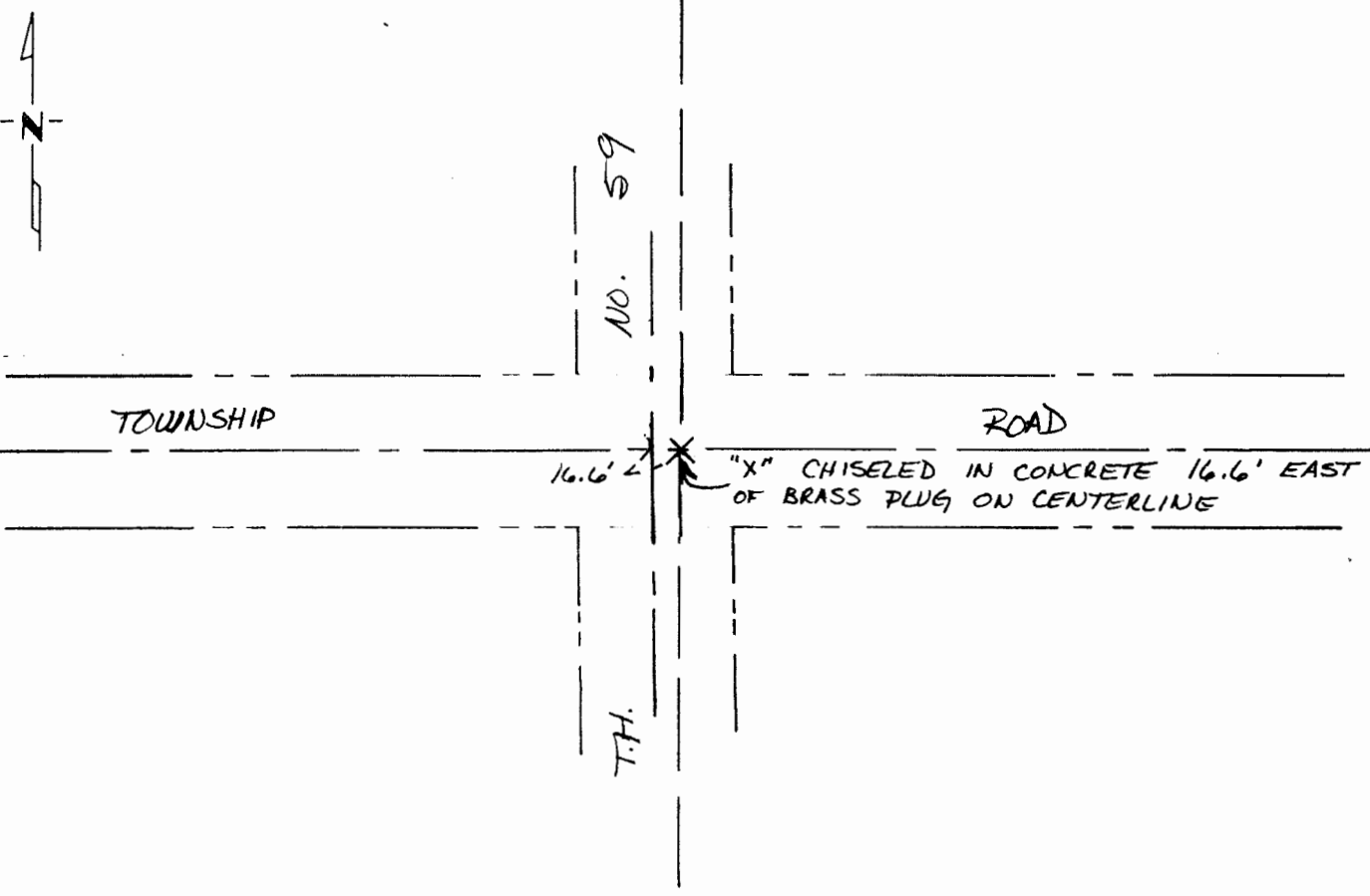
At the corner location shown on the sketch:

On 12/18/91 found an "X" CHISELED IN CONCRETE  
DATE

left monument as found,  lowered monument,  removed monument (explain)

On \_\_\_\_\_ placed a \_\_\_\_\_  
DATE

### SKETCH OF REFERENCE TIES



Statement of evidence relative to this corner location is on back of page.

I hereby certify that this document and the data contained herein was prepared by me or under my direct supervision.

C. M. Ragquist 1-8-91  
SIGNATURE DATE

Registration No. 6700

Land Surveyor,  Professional Engineer

County Surveyor,  County Engineer

### OFFICE OF THE REGISTER OF DEEDS

County of MURRAY

I hereby certify that this document was filed in the Reg. of Deeds office at \_\_\_\_\_ .M. on the \_\_\_\_\_ day of JAN 14 1992 A.D., 19 \_\_\_\_\_

County Recorder James V. Johnson  
By \_\_\_\_\_, Deputy

DOCUMENT NO. \_\_\_\_\_

SURVEY NO. Mu 9102 S  
SIOUX ENGINEERING, INCORPORATED ..... WINDOM, MINNESOTA